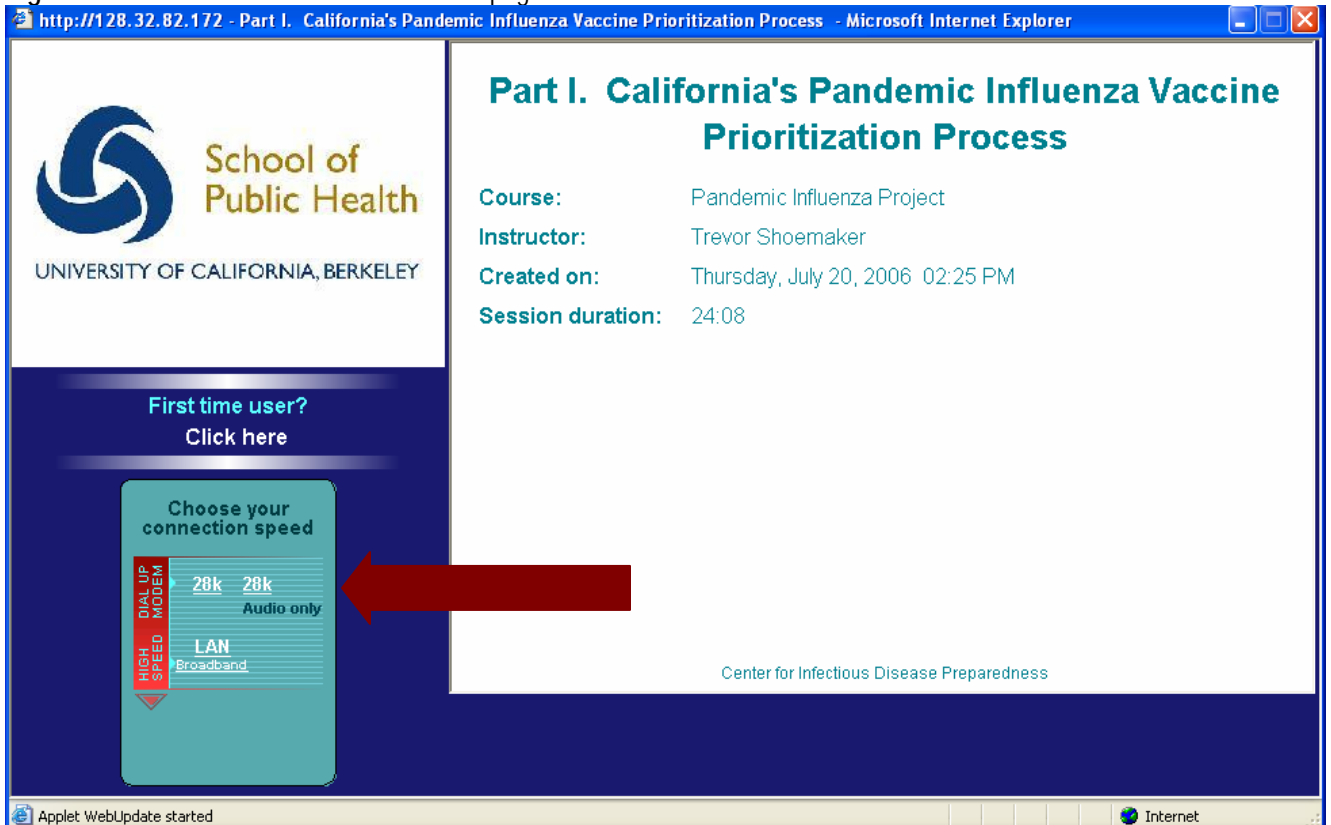


# TEGRITY WEBLEARNER® VIEWING INSTRUCTIONS

## 1. Click Part I. California's Prioritization Process webcast presentation

- Allow for a few minutes for the session to load
- The presentation webpage will indicate the course, instructor, and presentation title so you will know that you have opened the correct session to view.

Figure 1. Part I. Presentation Webcast Homepage



## 2. Choose your connection speed

- Choose from the available connection speeds based on the speed of your internet connection (**Figure 1**)
  - ▶ 100 kb for fast DSL connections (full presentation)
  - ▶ 56 kb or 28 for dialup connections (full presentation but reduced size video of instructor)
  - ▶ 28k audio only (full presentation with no video of instructor)

3. **Allow** a few minutes for the presentation to load

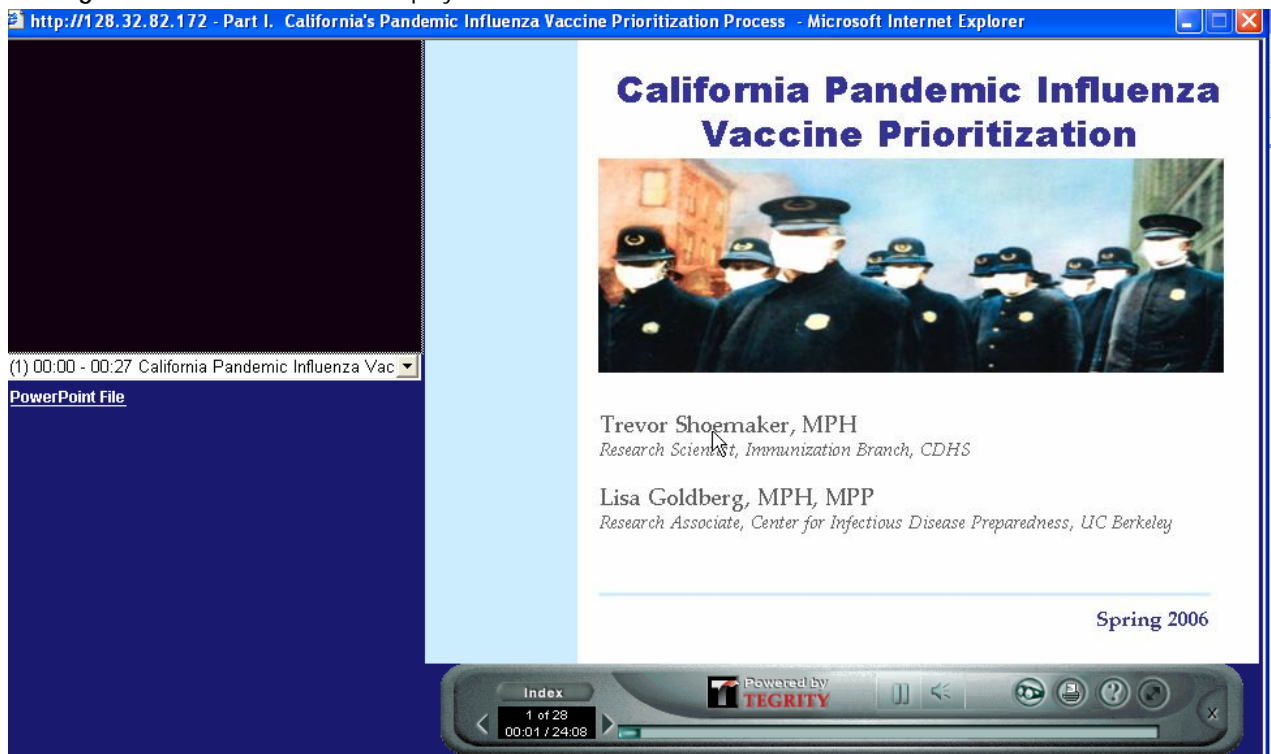
Figure 2. Loading Session Display



4. Presentation will **automatically begin**

- Your screen should display the following

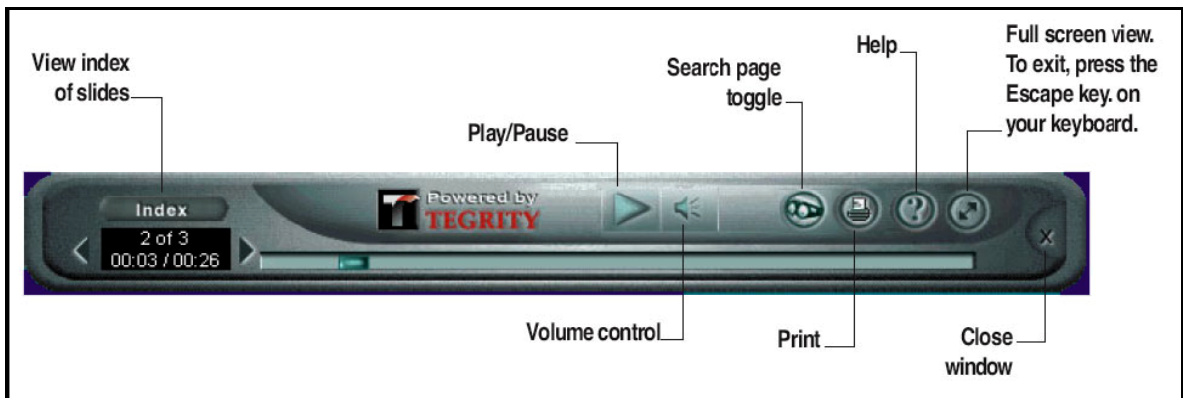
Figure 3. Part I. Presentation Display



## TEGRITY TOOLBAR ICONS

The figure below describes the icons on the Tegrity toolbar located at the bottom of the screen.

Figure 4. Tegrity Toolbar Icon Descriptions

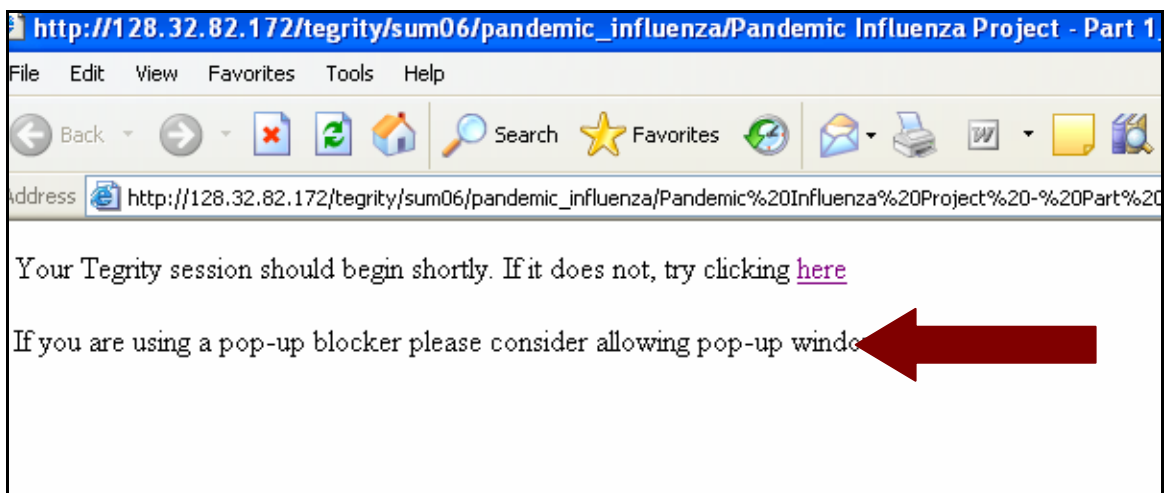


## TEGRITY WEBLEARNER TROUBLESHOOTING

If Part I. Presentation Webcast Homepage does not load automatically

- Maximize larger window (**Figure 5**) and follow instructions

Figure 5. Tegrity Alternate Window Display



## After choosing connection speed, if the presentation does not load

1. Check to make sure you have loaded all programs you need to view webcast
2. Click Here under First Time User? (Figure 6)
  - Click this button to access a wizard to test whether your computer is equipped to access the Tegrity recording.
  - If your computer is not properly equipped, Tegrity will either load the necessary components automatically or you will be directed to a web site, and an option to get the Windows Media Player.
  - This icon is a direct link to the Windows Media Player web site that enables you to download a current version of Media Player. You must have this in order to view Tegrity recordings.
  - You must have administration rights on the computer in order to download some components

Figure 6. First Time User Help Display

The screenshot shows a Microsoft Internet Explorer browser window. The main page is titled "http://128.32.82.172 - Part I. California's Pandemic Influenza Vaccine Prioritization Process - Microsoft Internet Explorer". It features the logo of the School of Public Health, University of California, Berkeley. A red arrow points to a button labeled "First time user? Click here" on a presentation slide. Below this button is a "Choose your connection speed" box with two options: "DIAL UP MODEM" (28k Audio only) and "HIGH SPEED Broadband" (LAN). An overlaid "First Time User Help" dialog box is open, displaying the following content:

**Welcome to First-Time User Help for the Tegrity eLearning Experience!**

**1) Test your Browser and Components**

This wizard checks if your browser has all the components required for viewing Tegrity recordings or live sessions on your PC or Mac. If anything needs to be installed or upgraded, it will provide you with detailed instructions and links for downloading.

[Test my browser](#)

*Please note: If the button does not work, make sure the Java Script option is enabled in your browser preferences.*

**2) Get Started**

To begin streaming the recording or join a live session, select a link in the "Choose Your Connection Speed" box on your left. If a "Download for Later Viewing" link appears at the